

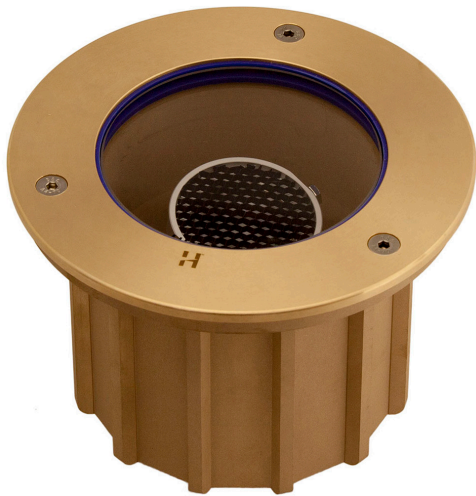
Lawn Light CAST BRONZE

LLCAST

DESCRIPTION

The Lawn Light is designed for installation into a lawn or garden bed and can be mowed over without damaging the luminaire. The lamp can be directed up to 20 degrees at a bush, tree, or the outside of a building, etc. The luminaire is fit with a flush fit lens to stop water pooling and depositing dirt on the lens. The cast Bronze Lawn light was designed to survive in highly fertilized environment with superior longevity.

CATEGORY
RECESSED & INGROUND



PURE LED

LED Chip	Cree XHP-50-2 Plug and Play, field replaceable LED board
Output	600lumens @ 1050mA max
Lumens Per Watt	100lm/6W
Power Consumption	6 watts @1050mA
Colour Temperature	2700K, 3000K and 4000K
CRI Warm White (3000K)	90 standard
Beam Angle	15, 25, 38, 60 degrees

*Specification for pureled only, for retrofit lamp options please see alternative lamps page.

PHYSICAL PROPERTIES

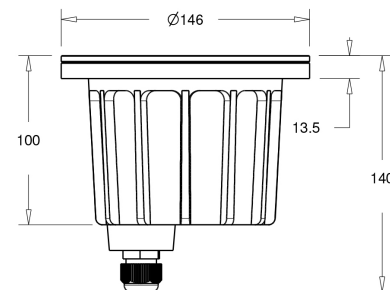
Materials	Solid Bronze
Ingress Protection	IP67
Standards	AS/NZS 61046, UL 1838, 2108, CSA C22.2 No. 250.7, 250.0-08, CE

POWER SUPPLY OPTIONS

DRIVER REQ FOR SERIES WIRED (CC FORMAT) ** | TRANSFORMER REQ FOR PARALLEL WIRED (CV FORMAT)***
NO DRIVER REQ FOR RETRO 'R' (INTEGRAL 230V IN)

** See pages 3-5,7,9 power supplies

*** See pages 11-12 power supplies



PRODUCT CONFIGURATION

LUMINAIRE	POWER	BEAM	COLOUR	ACCESSORIES	MATERIAL/ FINISH
LLCAST					
/L/S	1050mA INPUT (CC) SERIES WIRED	15	15°	2 2700K	HCL
/L/D3	2W, 12VAC INPUT (CV) PARALLEL WIRED	25	25°	3 3000K	CJK
/L/D7	4W, 12VAC INPUT (CV) PARALLEL WIRED	38	38°	4 4000K	FL
/L/D10	6W, 12VAC INPUT (CV) PARALLEL WIRED	60	60°		GS05
MR16	12V 5W RETROFIT LAMP				
/L/S PURELED SERIES WIRED Remote constant current driver required. Individual fixtures require: 6VDC@1050mA, 1050mA maximum		/L/D PURELED PARALLEL WIRED Remote 240VAC-12VAC transformer required. Hunza integrated plug and play driver included. Input:9-15VAC. Output: 6VDC @ D3=350mA, D7=700mA, D10=1050mA			
SBZ SOLID BRONZE					